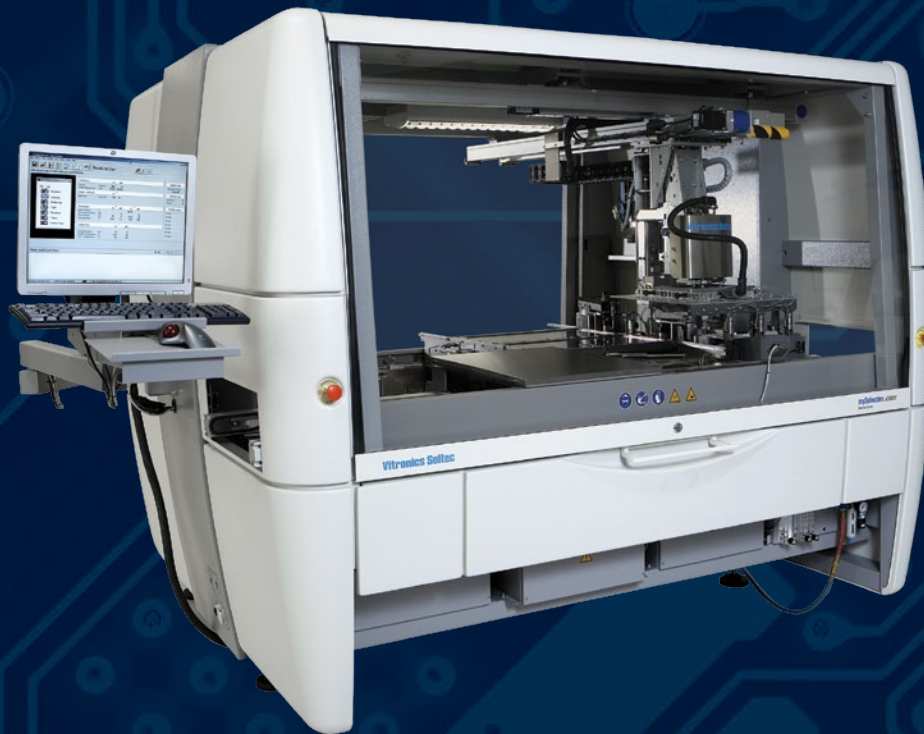


Vitronics Soltec

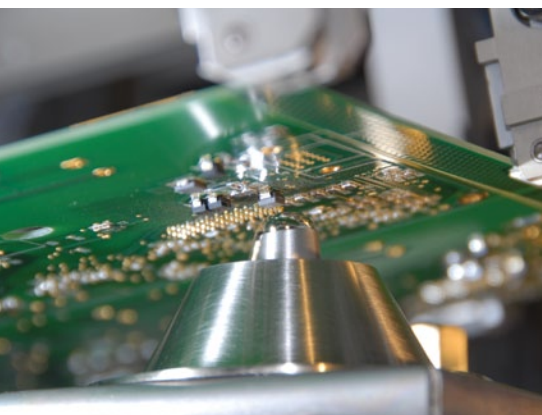
A WORLD OF SOLDERING SOLUTIONS

Proven Performance



**mySelective
6748**

- High speed MultiWave soldering
- Accurate multipoint fluxer
- Process capability reports
- Easy programmability



SelectWave soldering



MultiWave soldering



Forced convection

mySelective 6748

mySelective 6748 brings a new dimension to selective soldering technology. It's what you need today to meet the growing challenges of high yields, cost-efficient production, and process control. The mySelective 6748 offers the ability to solder each joint under its optimum process parameters. The machine's architecture allows it to assume an optimized configuration to accommodate the appropriate process parameter settings for each individual application.

Key standard features

- MultiWave solder pot
- X-Y fluxer
- Inline preheat
- SMEMA interface
- EasyTeach 2 offline programming

Key optional features

- Closed loop preheater management
- Precision wave height control
- Board warpage compensation
- Forced convection preheat
- Tandem fluxer in X or Y
- Fiducial recognition
- Management information system
- Advanced process viewing camera
- SelectWave for single point soldering

Model mySelective 6748	Max. PCB size 410 x 410 mm	Max. component height top side 120 mm	
Required PCB edge clearance 3 mm		Max. PCB weight 5 kg	Additional options <ul style="list-style-type: none"> • Offline programming with DXF import • Separate air & nitrogen controls • Configurable outputs in gripperhead • 2nd MultiWave solder pot
Pressurized fluxer 130 or 270 micron nozzle, X-Y robot	Solder pot volume 374 – 425 kg	Preheater lamp unit 9 kW quartz	
N2 consumption 120 l/min (typical)	Power consumption 37 kVA max	Power supply 3 x 400 V 50/60 Hz	



Product warpage compensation



Advanced SDC unit



Closed loop preheat control

Vitronics Soltec

An ITW Company

www.vitronics-soltec.com